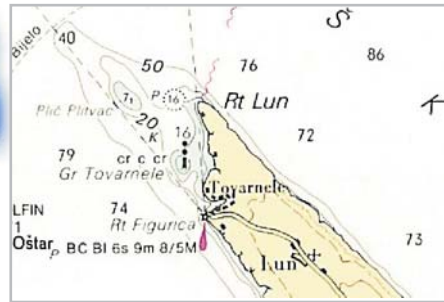


The Island of Pag



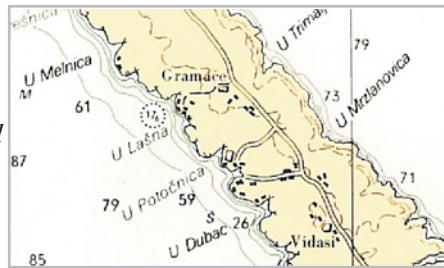
The island of Pag is 66 km in length. The most remarkable places to dive are situated on the northwest coast of the island beneath the steep bare land, barren by the strong north wind- the bora.



A steep wall stretches through its entire length, from Pastura Bay to Cape Lun, starting from the mere coast and going down to 60 meters of depth.

It is covered with various sponges, gorgonians of different color and shape and you can usually see crabs, lobsters, forkbeards, congers and catfish.

However, the most beautiful posts are Mrzlenovica, Badanj, Zastene and the Cape Lun itself. Cape Lun is the most beautiful part of the island of Pag and it provides a possibility for great underwater photographs at 30 to 40 meters. At this depth, there is a red gorgonian forest with gorgonians ranging up to 1 meter in diameter. One can also find lobsters, congers and other species of fish. In the more shallow waters you can always see octopuses hiding in their holes and every now and then you can come across sea horses.



The Wreck "Rosa" also known as "Ston"

At Mrzlenovica, there is a detached small isle with a wonderful overgrown wall extending southeast, reaching the depth of 50 meters. At 30 do 35 meters, there are three aligned towers ranging from 4 to 6 meters of height.

Once, and if, we reach the depth of 40 meters a then turn right, we will see, at a 15 meters distance, the sunken ship Rosa with its bow turned towards the coast, going from 38 to 51 meters of depth. The ship sunk during a strong storm 60 years ago. The wreck is overgrown with sea grass and you can see scorpionfish around it. Beneath the wreck, a European conger and a European lobster live in harmony.

